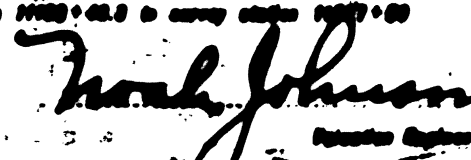
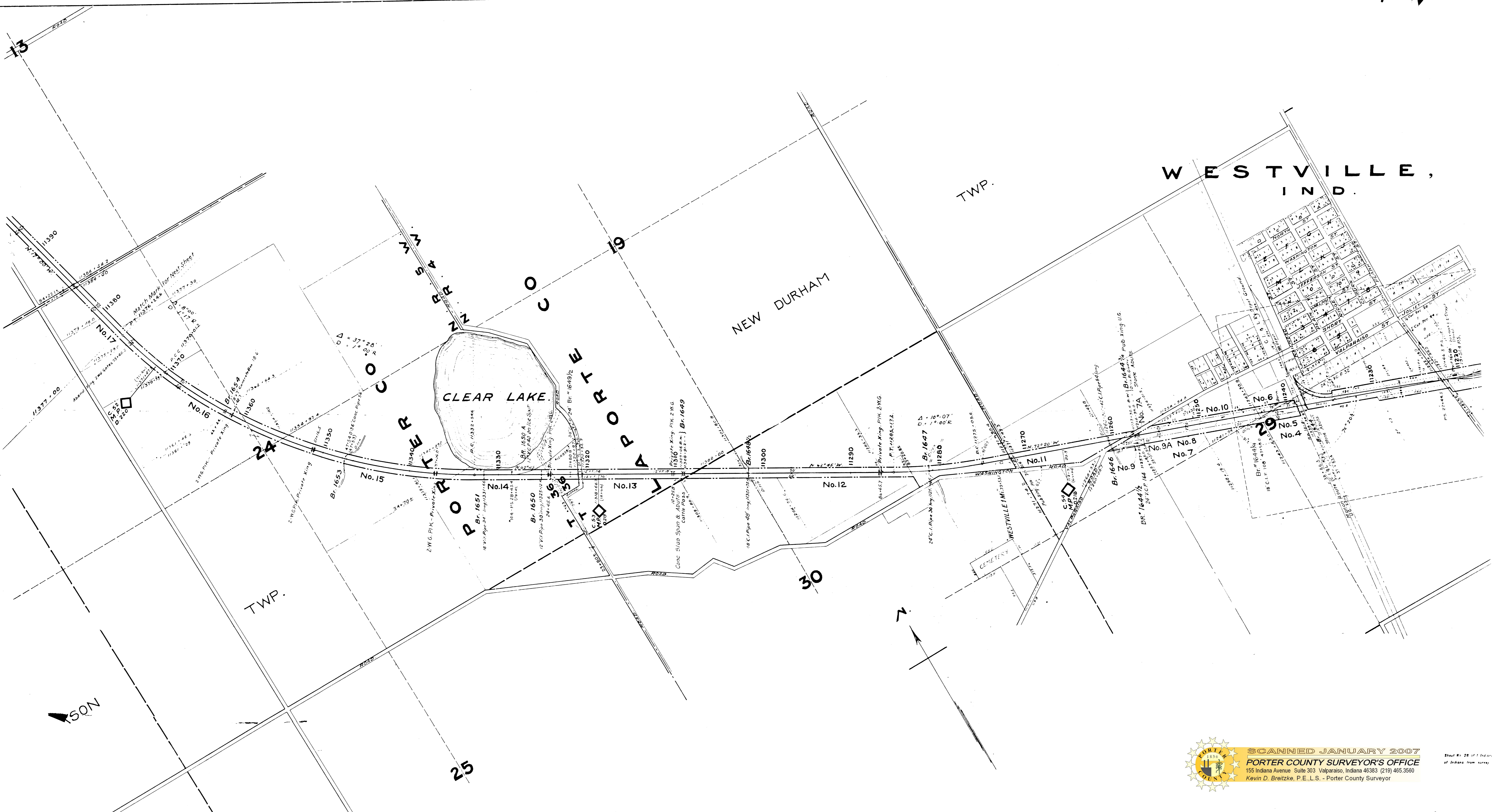



SCANNED JANUARY 2007
PORTER COUNTY SURVEYOR'S OFFICE
 155 Indiana Avenue, Suite 303, Valparaiso, Indiana 46383 (219) 465-3560
 Kevin D. Bretzke, P.E., L.S. - Porter County Surveyor

Under the Act of 1836 of the General Assembly, Chapter 10, Section 10, and
 of Indiana, the survey under 2007-01-01 is hereby approved.

 Kevin D. Bretzke, P.E., L.S.

RIGHT OF WAY AND TRACK MAP
WABASH RAILWAY
 OPERATED BY
WABASH RAILWAY
 STATION 61000-0.0 TO STATION 61000-0.0
 2007-01-01



WESTVILLE,
IND.

TWP.

NEW DURHAM

CLEAR LAKE

W
A
R
N
I
N
G
R
O
A
D
P
R
O
P
E
R
T
Y
P
R
O
P
E
R
T
Y
P
R
O
P
E
R
T
Y

TWP.

30

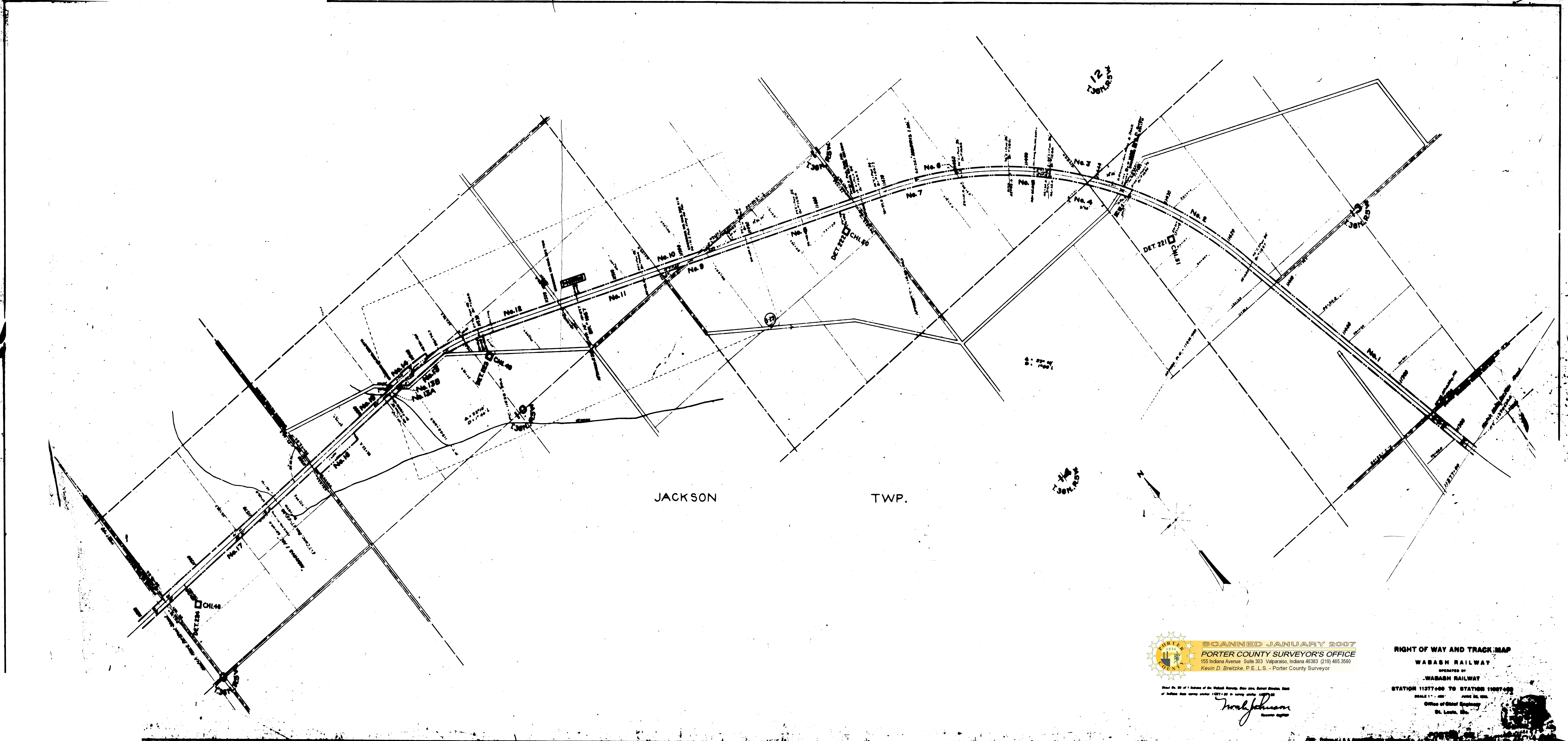
25

SON



SCANNED JANUARY 2007
PORTER COUNTY SURVEYOR'S OFFICE
 155 Indiana Avenue Suite 303 Valparaiso, Indiana 46383 (219) 465.3560
 Kevin D. Breitzke, P.E., L.S. - Porter County Surveyor

Sheet No. 28 of 1 Indiana
 of Indiana from survey 1848

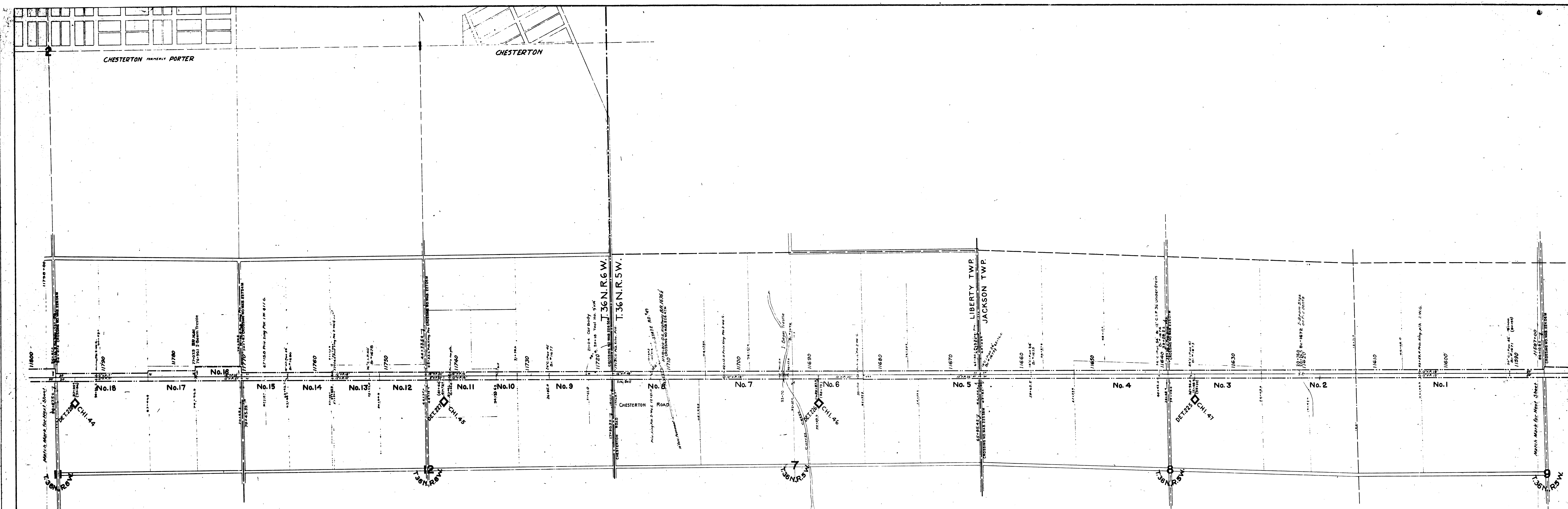


JACKSON TWP.

SCANNED JANUARY 2007
 PORTER COUNTY SURVEYOR'S OFFICE
 155 Indiana Avenue Suite 303 Valparaiso, Indiana 46383 (219) 465-3560
 Kevin D. Breitzke, P.E., L.S. - Porter County Surveyor

Kevin D. Breitzke
 Surveyor

RIGHT OF WAY AND TRACK MAP
 WABASH RAILWAY
 OPERATED BY
 WABASH RAILWAY
 STATION 11277+00 TO STATION 11027+00
 SCALE 1" = 400'
 Office of Chief Engineer
 St. Louis, Mo.



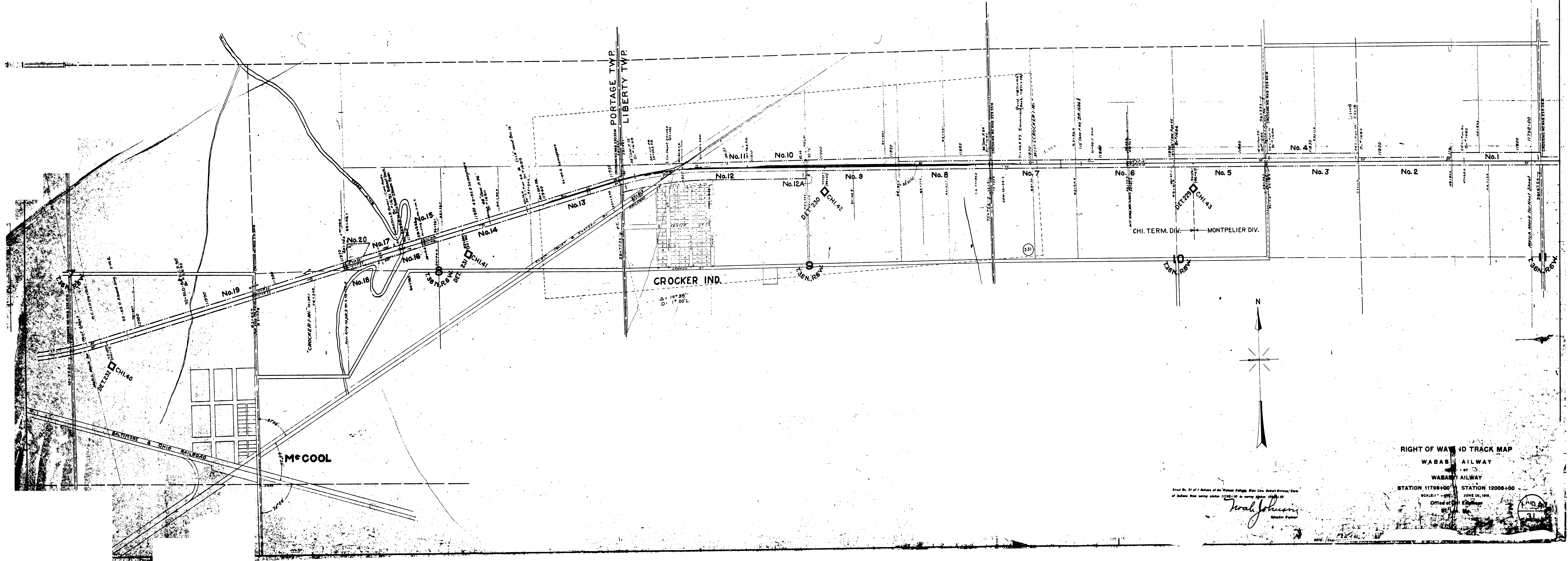

SCANNED JANUARY 2007
PORTER COUNTY SURVEYOR'S OFFICE
 155 Indiana Avenue, Suite 303, Valparaiso, Indiana 46383 (219) 465-3590
 Kevin D. Breitzke, P.E., L.S. - Porter County Surveyor

RIGHT OF WAY AND TRACK MAP
WABASH RAILWAY
 OPERATED BY
WABASH RAILWAY
STATION 11587+00 TO STATION 11798+00
 SCALE 1" = 400' JUNE 30, 1919.
 Office of Chief Engineer
 St. Louis, Mo.

This is a true and correct copy of the original map of the Wabash Railway, Main Line, District of St. Louis, Mo., as shown on the original map survey made in 1897-98 to locate the line from station 11587+00 to station 11798+00.
W. Johnson
 Station Engineer

LIBERTY

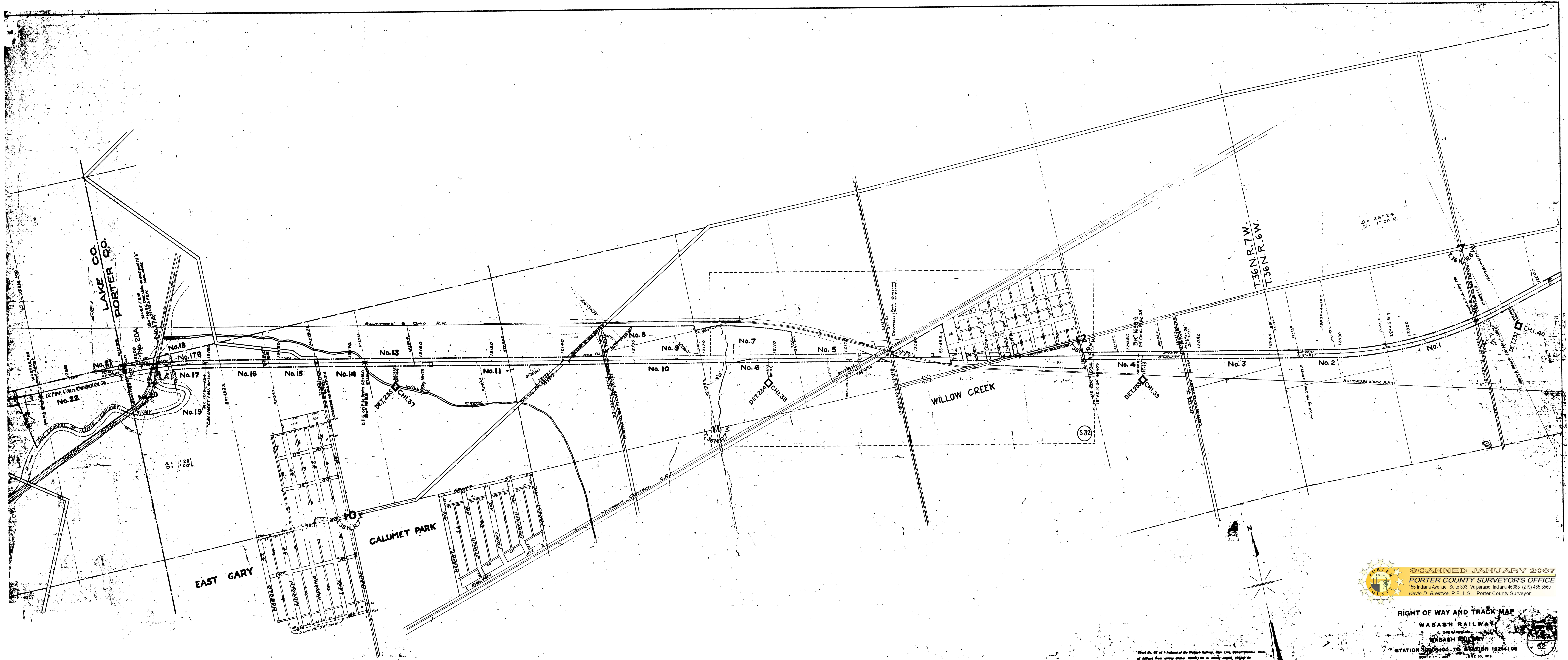
TWP.




RIGHT OF WAY AND TRACK MAP
 WABASH RAILWAY
 WABASH RAILWAY
 STATION 11798+00 STATION 12008+00
 SCALE: 1" = 400'
 JUNE 30, 1918
 Office of the Engineer
 ST. LOUIS, MO.

W. Johnson
 Station Engineer

11798+00
 12008+00




 SCANNED JANUARY 2007
 PORTER COUNTY SURVEYOR'S OFFICE
 155 Indiana Avenue, Suite 303, Valparaiso, Indiana 46383 (219) 465-3590
 Kevin D. Breitzke, P.E., L.S. - Porter County Surveyor

RIGHT OF WAY AND TRACK MAP
 WABASH RAILWAY
 STATION 1224-100 TO STATION 1224-106
 SCALE 1" = 400'
 Office of Chief Engineer
 St. Louis, Mo.

[Handwritten signature and date]
 1919