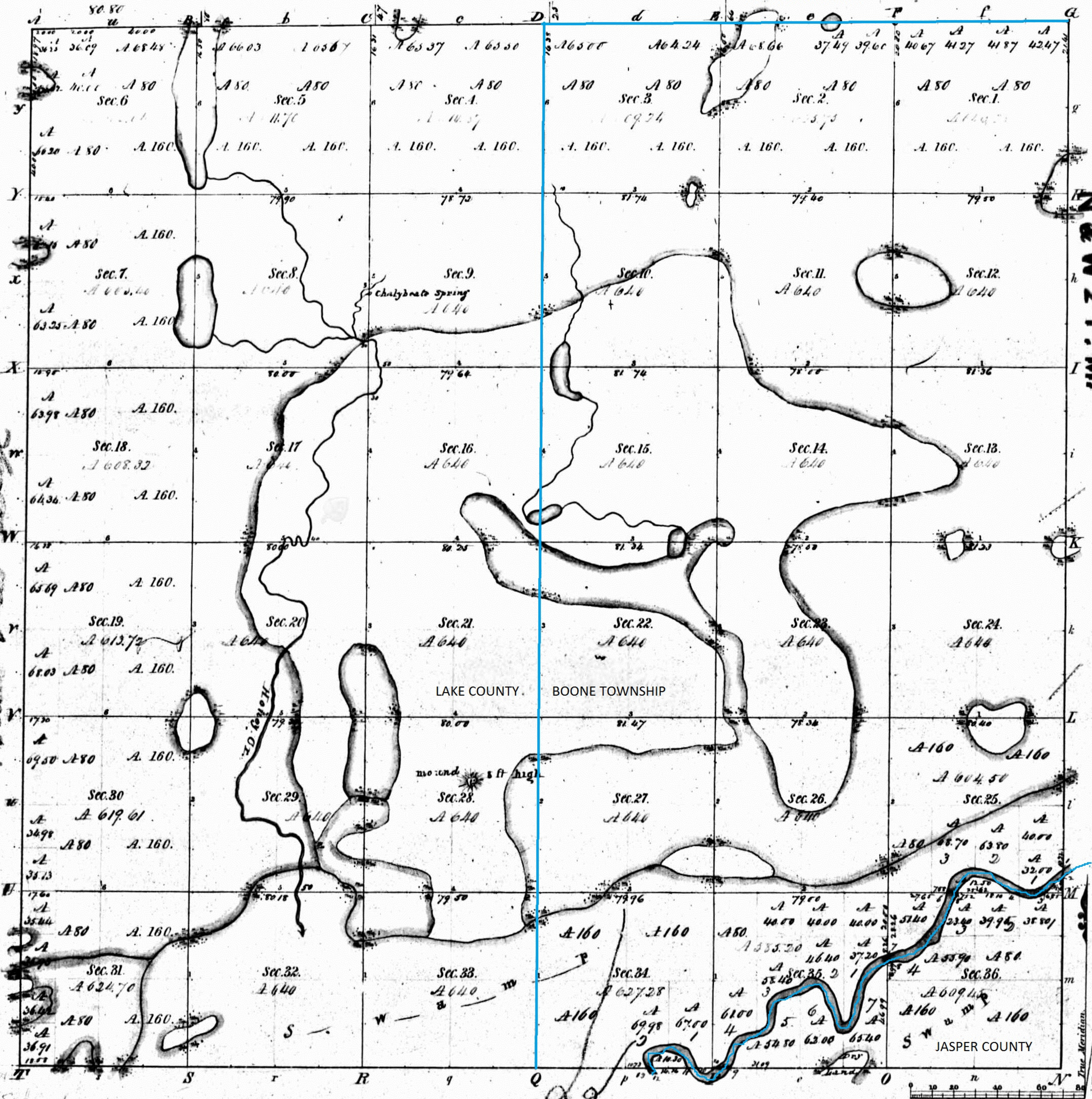


Township 19<sup>th</sup> XXXIII<sup>rd</sup> N. Range 19<sup>th</sup> VII<sup>th</sup> W. 2<sup>nd</sup> Mer.

PORTER TOWNSHIP



Meanders of Hankakee River.

Post	Courses	Ch. Lk.	Post	Courses	Ch. Lk.	Post	Courses	Ch. Lk.
Left Bank down								
1.	S 49° W	9.83		S 77° W	3.50			
2.	S 78° W	9.00		S 8° W	4.00			
3.	S 86° W	3.00		S 3° W	5.00			
	S 58° W	3.40		S 52° W	1.50			
4.	N 53° W	5.00		N 20° W	8.00			
	N 70° W	12.50		N 42° W	8.00			
	S 84° W	6.00		N 51° W	7.00			
	S 30° W	7.78		N 71° W	3.00			
5.	S 22° W	11.50		S 70° W	2.50			
	S 17° W	13.50		S 52° W	9.00			
	S 59° W	2.50		S 85° W	2.50			
	S 82° W	3.00		S 61° W	10.50			
	S 46° W	7.50		S 5° W	8.00			
	N 84° W	9.00		S 8° W	4.50			
	S 46° W	2.50		S 88° W	8.50			
8.	S 89° W	3.00		S 15° W	6.00			
	S 96° W	6.00		S 41° W	5.50			
	S 29° W	4.50		S 74° W	6.70			Cor. Sec. 34 75 55
	S 32° W	5.00		N 4° W	9.00			
	S 10° W	12.00		N 40° W	4.00			
	S 35° W	4.00		S 81° W	17.00			
	S 55° W	4.50		S 31° W	6.00			
	S 57° W	2.50		S 27° W	4.40			
	N 24° W	3.50						Copy of field notes
	N 50°	4.00						
	N 40° W	4.50						
	N 55° W	5.50						
	N 24° W	6.00						
	N 54° W	2.00						
	S 66° W	2.00						
	S 38° W	6.50						
	S 68° W	3.50						
	S 80° W	2.00						
	S 65° W	7.00						
	S 37° W	6.00						
	S 18° W	7.00						
	S 42° W	4.00						
	S 70° W	4.00						
	N 55° W	7.00						
	S 11° W	3.50						
	S 14° W	6.00						
9.	N 94° W	7.00						
	N 84° W	5.00						
	S 76° W	5.50						
	S 70° W	4.00						
	S 39° W	2.00						
12.	S 18° W	3.10						
Right Bank down								
1.	S 51° W	10.00						
	S 70° W	9.50						
	N 66° W	8.00						
	N 66° W	9.50						
	W 61° E	5.00						
	N 85° W	3.50						
	S 89° W	6.00						
	S 60° W	3.00						
	S 24° W	10.10						
0.	S 40° W	5.50						
	S 24° W	15.00						
	S 17° W	2.50						
	S 58° W	10.50						
	S 54° W	3.00						
	S 27° W	5.60						
7.	S 50° W	3.00						
	S 68° W	5.50						
	S 35° W	15.00						

Total number of Acres. 23643.06

Surveys Designated	By Whom Surveyed	Date of Contract	Amount of Surveys	When Surveyed	When p <sup>d</sup> for and ch <sup>d</sup> in the Sur <sup>g</sup> Gen <sup>l</sup> acc <sup>t</sup>
Township lines	Abby & Clark	27 June 1833	M. ch <sup>s</sup> Lks. 23. 77. 76	1 <sup>st</sup> of 1834	2 <sup>nd</sup> of 1834
Subdivisions	Unk <sup>n</sup> & Biggs	21 <sup>st</sup> of 1834	66. 26. 79	1 <sup>st</sup> of 1835	3 <sup>rd</sup> of 1835

The above Map of Township 19<sup>th</sup> 33<sup>rd</sup> North of Range 19<sup>th</sup> 7<sup>th</sup> West of the 2<sup>nd</sup> Principal Meridian, Indiana, is strictly conformable to the field notes of the survey thereof on file in this Office, which have been examined and approved.

Surveyor General's Office  
Cincinnati April 26<sup>th</sup> 1836.

Robt. T. Lytle  
Sur. Genl.

By Saml. Williams

31

